

DATA SHEET

opFLOW FOR NMIS

Netflow Analysis



NETWORK INSIGHTS

Provides information to allow organizations to determine how much of the network is being used, by who and in what way.

IDENTIFY BOTTLENECKS

Rapid identification of the reason for bottlenecks.

TRAFFIC AND SECURITY ANALYSIS

Rapid identification of unusual traffic patterns.

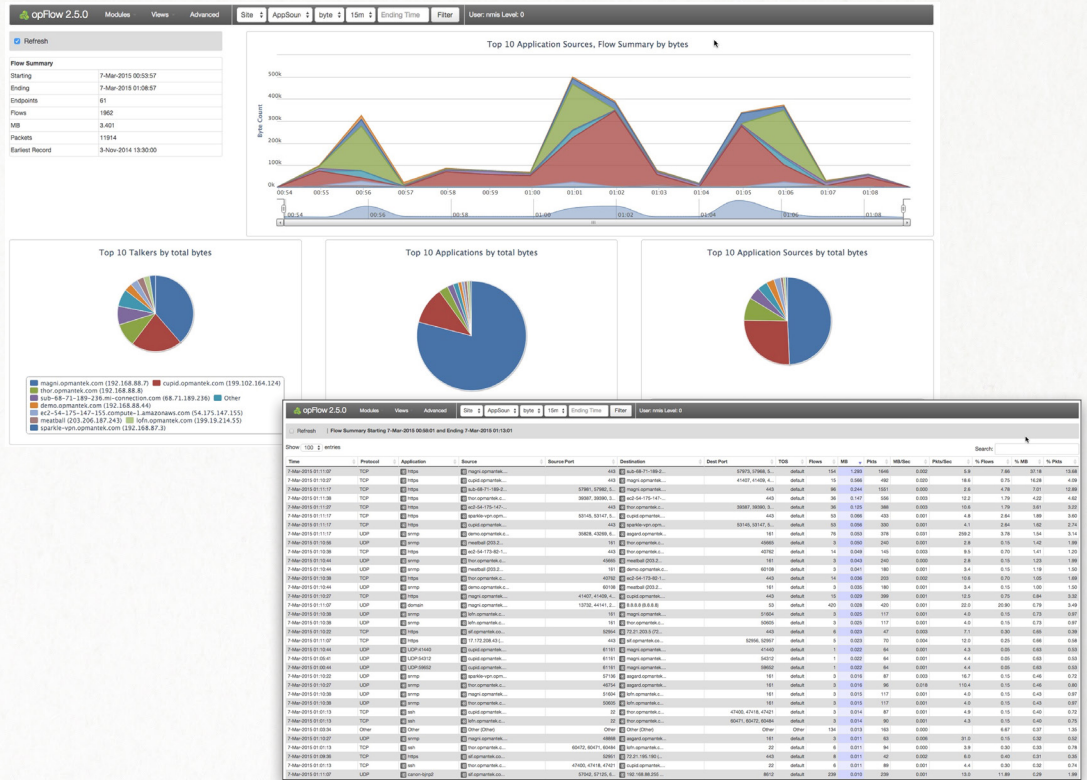
INFRASTRUCTURE PLANNING

Key information for planning and network grooming.

REDUCED DOWNTIME

Reduced downtime through rapid change impact identification - understand the business application flow on the network.

DOWNLOAD NOW



Congested Links? Suspected bandwidth hogs? High data usage? Suspicious behavior?

Use opFlow to see who is doing what on your network.

Integrating seamlessly with NMIS, opFlow collects NetFlow information to allow organizations to determine how much of the network is being used, by whom and in what way. opFlow allows users to quickly identify how a network's bandwidth is being used, by protocol, port, and user.

Minimum Requirements:

Quad core processor
8Gb of RAM
250Gb HDD
64 bit Linux (CentOS)
Apache

A bundled VM with NMIS and opFlow is available for download from the website

FOR MORE INFORMATION CONTACT YOUR NEAREST REGIONAL OFFICE OR VISIT WWW.OPMANTEK.COM

Opmantek Australia (Asia Pacific Head Office)
Level 13 50 Cavill Avenue, Surfers Paradise
Queensland 4217 Australia
Phone: +61731023042
Email: APAC@opmantek.com

Opmantek Mexico (LATAM Head Office)
Mexico City Paseo de la Reforma 342, Floor 26
Col. Juarez, C.P. 06600 Mexico, D.F.
Phone: +525584213294
Email: LATAM@opmantek.com

Opmantek USA (USA and Canada Head Office)
19720 Jetton Road 3rd Floor
Cornelius, N.C. 28031
Phone: +17042476286
Email: usa@opmantek.com

Opmantek UK (Europe Head Office)
7200 The Quorum, Oxford Business Park
North, Garsington Road, Oxford OX4 2JZ, UK
Phone: +441865522032
Email: europe@opmantek.com